

## The LEAF - the foldable bike trailer for shopping, travel and city life.

**Thank you** for buying a Carry Freedom LEAF, the trailer for shopping, travelling and city life. The trailer can fold flat for compact storage and ease of use when travelling. These instructions will help you get the most out of your new LEAF.

Read these instructions carefully before use.

### IMPORTANT:

**It is your responsibility to understand these instructions. We do not accept responsibility for how you use, modify, ride, or load the trailer. You must decide if what you are doing with the trailer is safe, within your ability, and within the law. Please check your highway laws concerning bicycles and trailers.**

### The LEAF:

Trailer for shopping, travelling and city life.

Ideal for people living in apartments.

Quickly folds flat for compact storage.

Can carry a week's shopping.

Large wheels make stairs easy

Compact and manoeuvrable for use in crowded markets and streets.

Side Leafs create a parcel shelf for occasional large boxes.

Fits euronorm beer crates.

Made from renewable wood, and recyclable aluminium

Upright cycling position makes it visible and short in heavy traffic, making it safe to use in cities.

Carries 45 kg - Weighs 8.6 kg

Fits to all seat posts with one special bracket

Wheel size 16"

Basic load area 59.5 cm x 42.2 cm x 28.8 cm

Frame material aluminium 6000T6

Comes with hitch, safety strap, reflectors and manual.

Folds flat for compact storing, travel and ease of use

### Options:

Travel bag for the folded position

Shopping bag

carry  
freedom.

# MANUAL

english

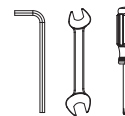


THE LEAF

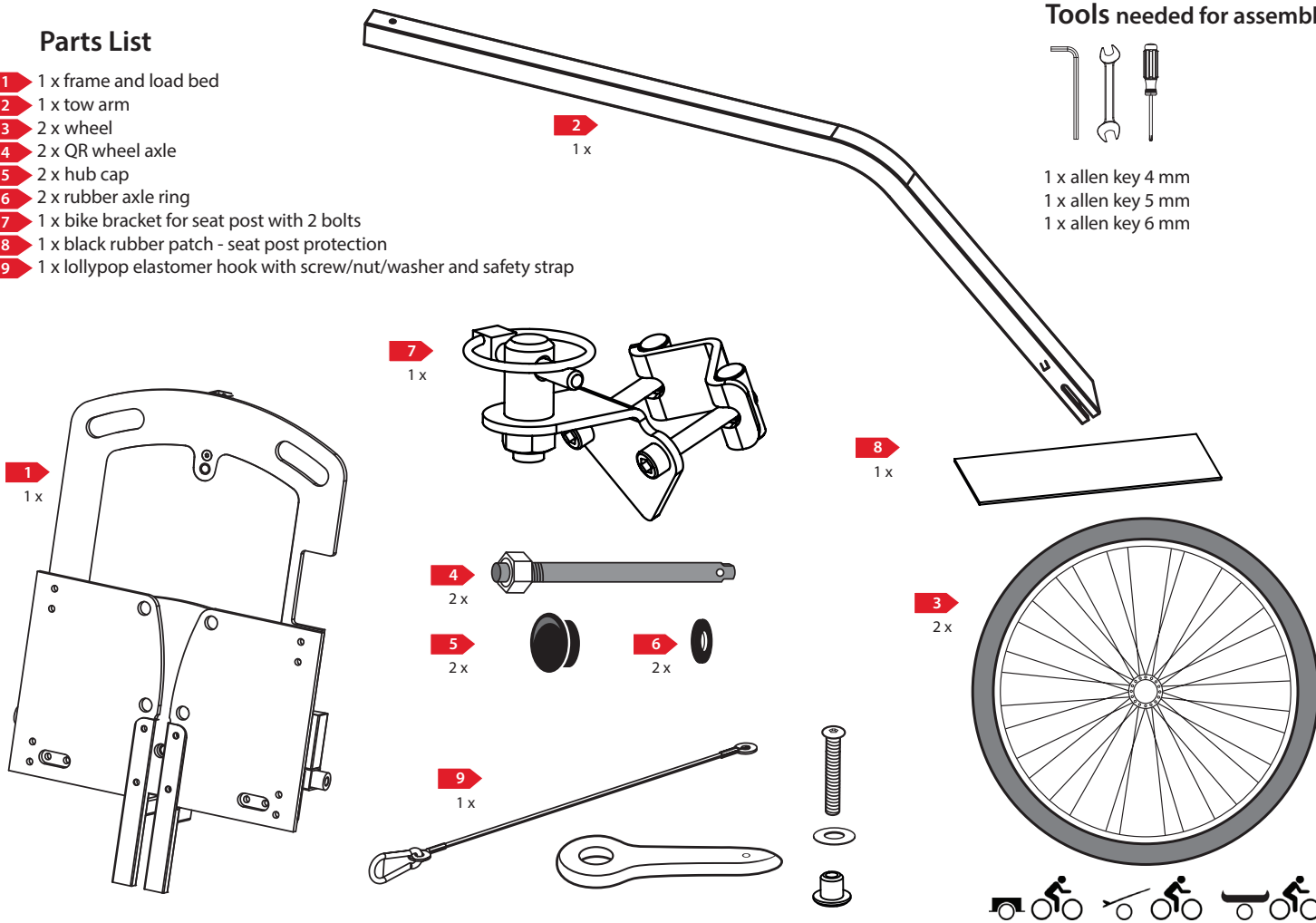
## Parts List

- 1 1 x frame and load bed
- 2 1 x tow arm
- 3 2 x wheel
- 4 2 x QR wheel axle
- 5 2 x hub cap
- 6 2 x rubber axle ring
- 7 1 x bike bracket for seat post with 2 bolts
- 8 1 x black rubber patch - seat post protection
- 9 1 x lollypop elastomer hook with screw/nut/washer and safety strap

## Tools needed for assembly



- 1 x allen key 4 mm
- 1 x allen key 5 mm
- 1 x allen key 6 mm



## Assembly LEAF

The LEAF is easy to assemble. The Trailer is folded to fit in the box, so fit the tow arm, assemble the wheels and attach the hitch and you are ready to go!

### 1 Assembly - Wheel to Frame

Check the tires to determine the left and right side wheel. Push the button on the end of the axle (#4), and insert into the wheel. The rubber ring (#6) on the axle fits between the hub and the frame. This ring stops water getting into the bearings and helps against trailer noise.

#### Important!

Grease the axle before inserting into the frame.

2 Insert a rubber hub cap (#5) to cover the axle end.

3 Push the hub cap and insert the wheel into the trailer. Pull at the wheel to ensure it is secure. If not the axle length can be adjusted - see **Adjusting axle length**.

The rubber hub caps can fall out but this does not shorten the bearing life of the wheel, as the inside bearing has the most strain. Secure the caps with a drop of super glue or by using a zip tie between two opposing spokes.

### Adjusting axle length

If an axle is too short the wheel and axle will fall off, if the axle is too long the wheel will rattle against the frame, it is better to be too long than too short.

To adjust the axle length, fit a 10 mm spanner to the flats at the end of the axle and a 19 mm spanner to the lock nut at the other end. Twist the lock nut to lengthen or shorten the axle. Adjust by small increments only, checking the axle in the frame until it's secure and does not rattle excessively. This is important when using the small rubber washers we include to reduce noise and to protect the bearings. Recheck the length at regular intervals.

### 4 Assembly - Tow Bar

Slide the tow bar (#1) into the main frame (#4) until the press button finds the location hole in the frame. Now tighten using the quick release lever. Make sure the quick release lever is secure. To release the tow bar loosen the quick release lever, press the button and slide the tow bar out of the frame.

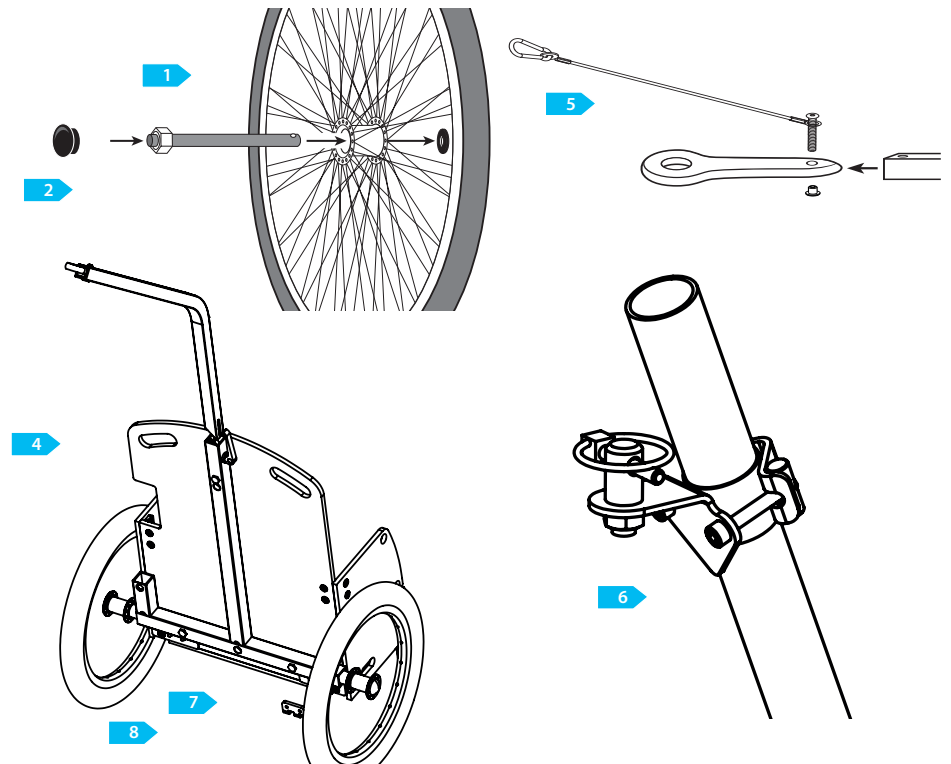
There is also a second walking position when the tow bar is fitted to the lower parking position in the frame. This is also the folding position for the tow arm. This connection uses the press button only.

## Attaching the hitch

5 Fit the red lollipop elastomer (#8) with the safety strap to the tow bar end with the screw, nut and washer.

6 Fit the hitch adapter to the bikes seat post using the black rubber patch to protect the seat post. The bike bracket (#7) for your trailer is fixed permanently to your bike. The trailer hooks to this, and is secured by the safety pin.

Congratulations! The assembly is finished.



## Folding the LEAF

The LEAF is easy to fold. You will be surprised how easy it is.

**Step 1** - The tow arm must be in the folding position

**Step 2** - Fold the baseboard up and the two side panels in. The load bed is now folded.

**Step 3** - Remove the first wheel with the axle in place and use the wheel to fix the folded panels in place, by inserting the axle into the bottom load bed park position.

**Step 4** - Remove the second wheel with axle and fit this into the top load bed park position. The trailer is folded.

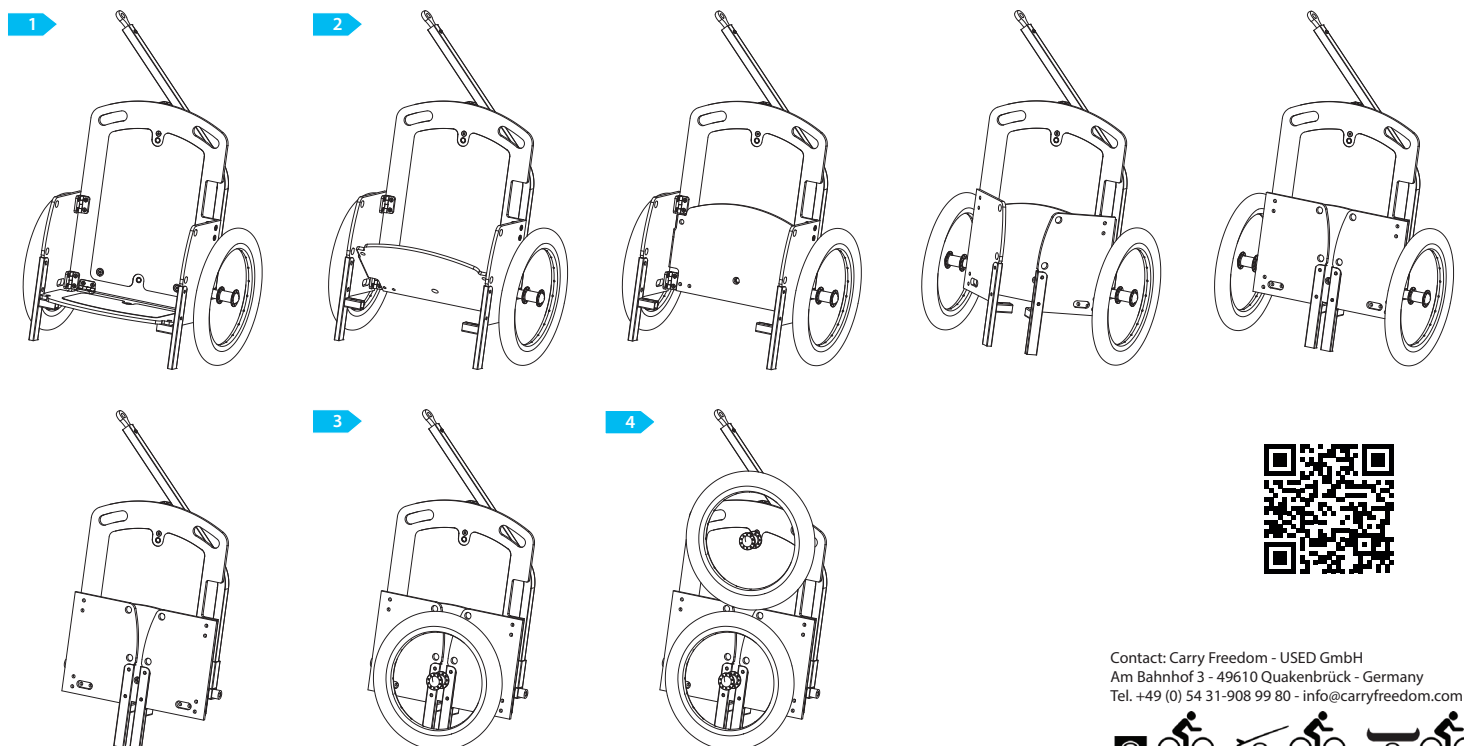
The trailer can now be carried by holding the tow arm in the recess designed for your hand.

Practice this and you will see how easy it is. There is also a video on our website and YouTube Channel.

## Using the LEAF

The LEAF load area is sized to take standard loads. This means a beer crate or carry-on size suitcases will fit. Tie them down with straps and you are ready to go. A shopping net will also work. We offer a special bag (carry-on size) made of recycled advertising banners by the British brand UPSO. This bag has straps that fit into the hand grips of the LEAF.

Wide loads can be fitted on top of the side panels. This way it is possible to carry a suitcase horizontally.



Contact: Carry Freedom - USED GmbH  
Am Bahnhof 3 - 49610 Quakenbrück - Germany  
Tel. +49 (0) 54 31-908 99 80 - info@carryfreedom.com

